

Accessibility Guide for Chester Fairoaks Caravan & Motorhome Club Site

Contact for Accessibility Enquiries: Please ask for the Duty Manager

✉ chesterfairoaks@camc.com

☎ 01513 551600

🌐 <https://www.caravanclub.co.uk/club-sites/england/north-west-england/cheshire/chester-fairoaks-caravan-club-site/>

At a Glance

Level Access

- The site is set relatively level throughout

Step only Access

- There are no step only areas of the site, however the dog walk has uneven footing and may be difficult to navigate with walking aids or in a wheelchair

Accessible Toilets and Showers

- There is a combined accessible toilet and shower cubicle in the toilet block

Accessible Pitches

- No designated accessible pitches, however pitches are allocated according to your needs or preference, so please contact us in advance to discuss your requirements.



We support the Hidden Disabilities Scheme

- Our organisation supports the Hidden Disabilities Scheme, lanyards and pins are available in reception

Site Address

Chester Fair Oaks Caravan Club Site
Rake Lane,
Little Stanney,
Chester,
Cheshire,
CH2 4HS

Arrival and Reception

Approach Route

- Access onto the site is from a country lane, onto a tarmac driveway
- Follow the driveway around to the left, the reception building is on the left of the driveway
- There is a single pole barrier that allows access to the main site, with controls at 1100mm
- The ground is level in this area with hard surfaced paths linking facilities.

Parking

- A new arrival bay is set within a few metres of the Reception building.
- There is space for 4 cars to park within 15 metres of Reception, however there are no marked bays or disabled bays. The ground is gravel here
- There are no Late Night Arrival bays

Entrance into Reception

- There is a dropped kerb at the road edge which leads to a level footpath. The footpath is 1100mm wide under a covered terrace. This then becomes a 1350mm wide block paved path which leads to the reception door
- The door is 750mm wide with a 30mm threshold
- The entrance door is not power assisted, and opens inwards
- A call bell is available to summon assistance, this is 1050mm above ground level



Reception

- There is approximately 2850mm x 2600mm turning space, clear of the desk and furniture
- The reception desk is set 900mm above the floor with no dropped section
- The desk is not fitted with a hearing loop



Getting around the Site

- The site is generally set relatively level throughout
- Pedestrians share vehicles routes which are well maintained tarmac, but do incorporate speed bumps
- There is a 1000mm wide paved path between the pitches towards the toilet block
- There is a 1500mm wide paved path which gives access to a 3 metre wide, covered terrace to the front and the rear of the toilet block

Pitches

- There are 96 pitches on site, 89 of which are hardstanding
- Roll out mats are not provided
- There are 9 identified accessible pitches which are between 15 metres and 50 metres from the toilet block, and between 100 metres and 150 metres from reception.
- Pitches are allocated according to your needs or preference, so please contact us in advance to discuss your requirements.
- There are possibly a further 3 accessible pitches behind the toilet block

Toilets and Changing Facilities

Accessible Toilets and Bathing Facilities – Toilet Block

- A combined Accessible Toilet and Shower cubicle is located in the Toilet Block which is set on the middle of the site
- There is a slight slope down to the front of the toilet block. The Accessible Toilet and Shower cubicle is accessed from an internal lobby in the Toilet Block
- The door is 850mm wide, over a level threshold and opens outwards
- The cubicle door is secured by a RADAR key. A key can be borrowed from Reception
- The cubicle's dimensions are 2350mm x 2400mm
- The WC pan is left hand transfer.
- The shower seat is left hand transfer
- The toilet seat is 480mm, and the shower seat is 480mm above the floor level
- The clear space to the side of the toilet is 900mm wide
- The cubicle is fitted with a pull cord alarm, which is tested frequently

- The shower seat and WC Pan are fitted with grab rails to assist transfer
- Shower controls are 1000mm high
- The shower head is fitted on a sliding rail, which is a minimum of 1200mm above floor level
- The basin taps and shower controls are fitted with levers



Standard Toilets and Washrooms

- There is one toilet and shower block to the middle of the site
- There is a paved pathway leading to an undercover terrace around the toilet block
- There is a covered terrace to the front and the rear of the building which gives access to a shared lobby
- The female toilets have 8 WC Cubicles, 5 Privacy Cubicles and 8 Shower Cubicles.
- The male toilets have 5 Urinals, one is at a lower position. 7 WC Cubicles, 5 Privacy Cubicles and 8 Shower Cubicles
- In the male and female area there is a modified WC cubicle, shower cubicle and privacy washbasin cubicle, with grab rails to assist with mobility
- Taps in each block incorporate lever controls



Baby and Toddler Room - Toilet Block

- The Baby and Toddler Room is accessed from the internal lobby
- The door is 800mm with a level threshold
- The door is opened via a code lock, which is 1500mm high
- The room's dimensions are 2250mm x 2200mm
- There is a half sized bathtub, with a shower above and thumb turn taps
- There is a lowered WC at 330mm
- There is a wall mounted drop down baby changing table at 800mm
- The basin is fitted with lever taps



Other Facilities

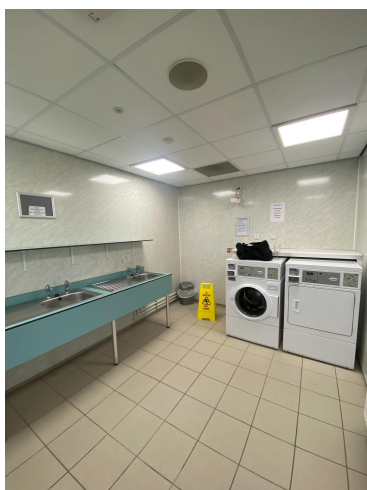
Dishwashing – Toilet Block

- The Dishwashing room is accessed via the paved path around the toilet block
- The door is 800mm wide over a level threshold and opens inwards
- There is 1800mm x 2400mm clear space within the room
- There are 4 standard sink units at 850mm high with 550mm knee space
- There is a shelf 550mm above the sinks



Laundry – Toilet Block

- The laundry room is accessed via the paved area around the toilet block
- The door is 850mm wide over a level threshold and opens inwards
- There is 3200mm x 2400mm clear space
- There is one front loading washing machine and one front loading tumble dryer, with token slots at 1050mm
- There are 3 sinks at 850mm with 550mm knee space below
- There are lever taps available



Information Room – Adjacent to Reception

- The information room is within the same building as the reception
- The door is 750mm with a 30mm threshold and is inward opening
- There is 3000mm x 3300mm clear space
- Information is displayed between 600mm and 1200mm high



Play Area

- There is a play area to the east of the site
- There is access via an 850mm wide path
- There is a 1100mm wide gate
- The play equipment is mounted on safety flooring



Dog Walk

- There is a dog walk close to the entrance of the site
- There is an uneven gravel path to access
- There is access via an 800mm wide gate
- The ground to the dog walk is uneven and natural footing



Service Points

- There are Service Points at various intervals around the site, please check the site map for details
- The service points have level access from the adjacent roadways
- The paths around the Service Points can be as narrow as 640mm wide
- The water taps are at a maximum of 770mm high, with cross head taps
- Chemical Waste Points can be found here too, at 1150mm high
- The bin store is to the south west of the site and has a 950mm opening with uneven ground. The bins are large waste bins, which may be difficult to use when using a wheelchair or walking aid



Service Point



Bin Store

Motorhome Service Point

- There is one Motorhome Service Point on site, located close to the toilet block
- The taps are 800mm high



Information

Written Information

- A range of leaflets for local attractions are available in the Information Room.
- Please ask at reception if you have difficulty reading third party leaflets and staff will be happy to read these to you upon request

Customer Care & Support

Booking Procedures

- If you have any specific requirements for your stay please contact the site directly and they will be happy to discuss your requirements and reserve you the most suitable pitch wherever possible.

Evacuation

- There is an assembly point in the South West Corner of the site, next to pitch 58, in the event of an emergency
- There is also an assembly point in the dog walk area
- Please ask at reception for more details

Customer Care and Staff Training

- All on site staff have received disability awareness and etiquette training.

Public Transport

- There is a bus service a 10 minute walk from the site, with buses to Liverpool and Chester
- The nearest train station is Capenhurst Station, which is 3 miles from site

Taxi

- Please contact the site who keep a list of local taxi companies including those offering a wheelchair accessible service where available.