

Access Statement

Old Hartley

Contact Information

For those wishing to contact Caravan and Motorhome Club by phone, typetalk calls can be made to sites, and for members only to the Contact Centre on 01342 327490. The Caravan and Motorhome Club's website has been designed with accessibility in mind, and includes keyboard navigation and Browsealoud texthelp. The Website complies with the W3C level A guidelines.

Arrival and Car Parking Facilities

This site is approached by a tarmac surfaced road with a grassed verge area available for visitor car parking. Visitors' cars are not allowed in the site. Opposite the reception is a tarmac surfaced area for 2 late arrivals, with electric hook-ups. This is a site that slopes all the way from the entrance, alongside which is the reception building, down to the cliff top at the bottom of the site. However, the area around the reception and toilet block facilities buildings is reasonably level.

Reception

From the tarmac access road reception is accessed from a ramped footpath, 5m long at a maximum gradient of 1:15. Immediately outside the door is a weather canopy. The inward-opening door has 800mm clear opening width, and clearly identified lever handle at 1000mm height. The call bell for attention is on the door frame at 1400mm height. Internally there is a turning circle space of 1500mm for wheelchair users. The counter is at 900mm height, with a lower section of 800mm width and at 700mm height at the fold-down flap. There is no hearing induction loop system to assist hearing aid users.

Pitches

There are 5 identified accessible pitches that are located along the south-west corner of the site, close to reception and the toilet block/facilities. No roll-out mats are available. The access roads are all tarmac, and the pitches have concrete strips with infill stone chippings, and car parking space alongside on grass. On a route with a gradient around 1:15, the accessible pitches are between 15m and 35m from the Accessible Toilet/Shower; 10m to 30m from the water service point; 30m to 75m from Reception and public telephone; 10m to 30m to the dishwashing area and Laundry; 5m to 15m from the Information Room.

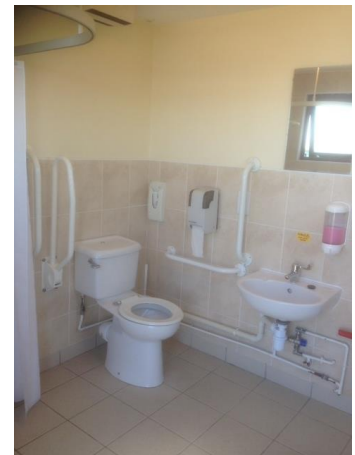
Circulation around the Site

The site is in a seaside, cliff top location, and generally slopes gradually from West to East. The even tarmac surfaced main site roads are for joint vehicular and pedestrian use, up to 5m wide. There is bollard lighting among the pitches, and no wayfinding signage, except on the outside of buildings.

Toilet Blocks

There is one toilet block on the site with restricted space for parking vehicles if visitors need to use their car to reach it. The male, female and accessible toilets share a 1200mm wide ramp that is about 5m long with a level landing.

The **accessible shower and toilet** is accessed via the ramp referred to above, and accessed by a standard key supplied by reception. The inward opening door has a flush threshold and 890mm clear opening width. The room size is 2500mm x 2150mm, and circulation space for a wheelchair user is a little restricted, particularly by the inward opening door. The WC is left-hand transfer, using space that is part of the adjoining level shower, there are grab-rails provided to assist. An alarm system is provided. The washbasin, with lever taps, is within reach of the WC. The hand dryer is out of easy reach of both the washbasin and WC. The shower has level access, measuring 1050mm by 10900mm, with a thermostatic shower control at 900mm height, a drop down seat at 490mm height, and hand shower with height adjustment from 1200mm to 1800mm.



The **male and female toilets** have outward opening doors with clear opening widths of 750mm, with level entry. In both male and female toilets, each has an identified ambulant disabled accessible WC with drop-down and fixed grabrails. The privacy cubicles have lever taps to the washbasin, but no grabrails. There is no shower specifically adapted for ambulant disabled people, but one cubicle is wider at 850mm, and has level access between wet and dry areas.

Other Facilities

There is a **laundry facility** located with level access from the drive. The door has an 800mm clear opening width. Internally there is a limited turning space of 1400mm for a wheelchair user. There is 1 standard 900mm height sink unit with cross taps, front-loading dryer and top-loading washing machine, with coin slot and controls to the rear at 1100mm height. There is also a fold-down ironing board at 1000mm height, with coin slot at 1500mm height.

The **dishwashing area** has level access, with an outward opening door, giving 800mm clear opening width. The space internally is restricted to 800mm deep and 2600mm wide. There are 2 standard sink units at 900mm height, with cross top taps.

The **information room** has a 160mm step, with an outward opening door 660mm clear opening width. The room has restricted internal space of 1900mm x 870mm. Information is on shelves at 850mm height.

There is **one public telephone** adjoining reception, and accessed by a level path. Space internally is limited to 900mm x 750mm. The door has a clear opening width of 770mm. The standard BT telephone has sound enhancement for hearing impaired people, and a coin slot height at 1450mm.

The water **service point** has level access.